



**YMCA CAMP  
ERDMAN**

---

**PRE-CAMP  
CHECK LIST**

# PARENT CHECK LIST

Forms & Waivers

Payments

Camp Store



# PARENT CHECK LIST

Forms & Waivers

Payments

Camp Store

**Camper forms and waivers must be completed through e-Pact prior to the first day of your Camp Session.**

**If you have not received an email from e-Pact requesting the completion of your camper's forms, please check your spam folder. You can request that the link be resent by email.**

# PARENT CHECK LIST

Forms & Waivers

Payments

Camp Store

**No COVID  
Requirements**

*\*subject to change\**

## MANDATORY FORMS

- Youth Waiver
- Medical Waiver
- Photo Release
- Archery Waiver

## SPECIALITY CAMP FORMS

- Horse Waiver
- Surf Waiver

## OUT OF STATE FORMS

- TB clearance form
- Flight Information Sheet

# PARENT CHECK LIST

**No COVID  
Requirements**

*\*subject to change\**

Forms

P

## HEALTH EXAM

Only required if camper has a history of asthma, heart defect/disease, seizures, diabetes, has recently been hospitalized, or is currently under a doctor's care

## MANDATORY FORMS

- Youth Waiver
- Medical Waiver
- Photo Release
- Archery Waiver

## SPECIALITY CAMP FORMS

- Horse Waiver
- Surf Waiver

## OUT OF STATE FORMS

- TB clearance form
- Flight Information Sheet

# PARENT CHECK LIST

Forms & Waivers

**Payments**

Camp Store

**Program fees are due no later than ten (10) calendar days prior to the start of the program**

**You can make a payment online by logging in to your ActiveNET account and selecting “pay on account” or over the phone at (808) 637-4615.**

# PARENT CHECK LIST

Forms & Waivers

Payments

Insurance

## DISCOUNTS

20% with Y Family Membership  
15% for Active Military Families  
5% for Sibling Enrollments

+ Financial Aid

Contact us:

[camperdman@ymcahonolulu.org](mailto:camperdman@ymcahonolulu.org)

808.637.4615

Program fees are due no later than ten (10) calendar days prior to the start of the program

You can make a payment online by logging in to your ActiveNET account and selecting "pay on account" or over the phone at (808) 637-4615.

# PARENT CHECK LIST

Forms & Waivers

Payments

Camp Store



**ERDMAN CLASSICS**

**NAVY CREWNECK** \$25

**GAGA T-SHIRT** \$10

**BLUE BELLA TANK** Adult \$12 Youth \$10

**VISOR** \$10

ORDER HERE! 



**BATTLE CHALLENGE**

**KOMOHANA** \$10

**AKAU** \$10

**HEMA** \$10

**HIKINA** \$10



Store gift cards can be purchased by searching "YMCA Honolulu Gift Card" in ActiveNET or by scanning the QR Code above!

Campers will have the opportunity to visit our Camp Store once per session. We have Camp Erdman T-shirts and additional merchandise available for purchase.

All merchandise is priced \$25.00 or under. Snacks and ice cream treats are no longer available for purchase in the Camp Store.



# GET EXCITED!

- Know the Camp Theme
- Check out the Cabins
- Pack!!
- Talk with your Camper(s)



# GET EXCITED!

Know the Camp Theme

Check out

Pack!!

Talk with

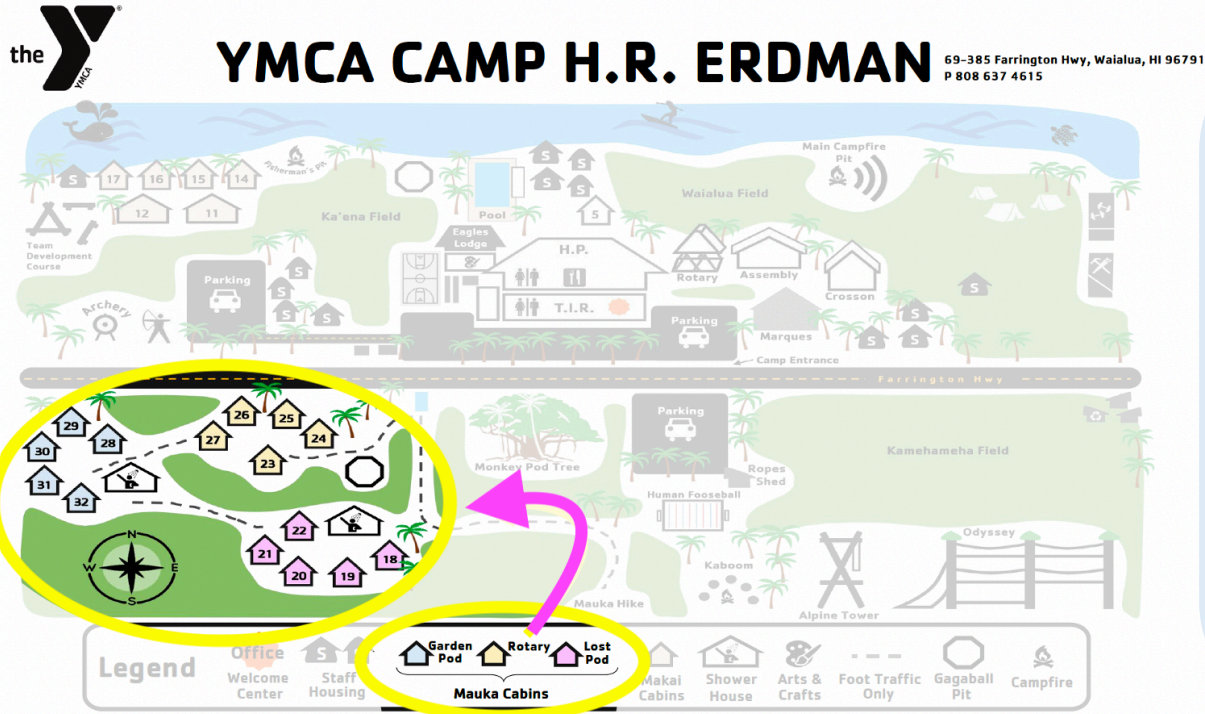
Camper(s)

- Session 1 - Superhero
- Session 2 - Nickelodeon
- Session 3 - DISCO
- Session 4 - Monster's Inc. / Monster's University
- Session 5 - Harry Potter
- Session 6 - NO THEME 😊 Mini Camp
- Session 7 - Disney
- Session 8 - Star Wars
- Session 9 - Percy Jackson
- Session 10 - Wild West



# GET EXCITED!

- Know the Camp Theme
- Check out the Cabins



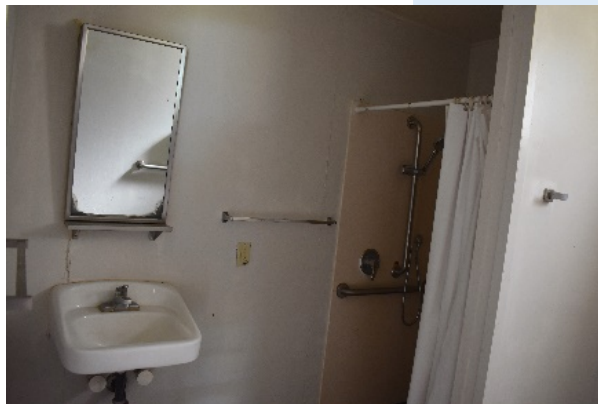
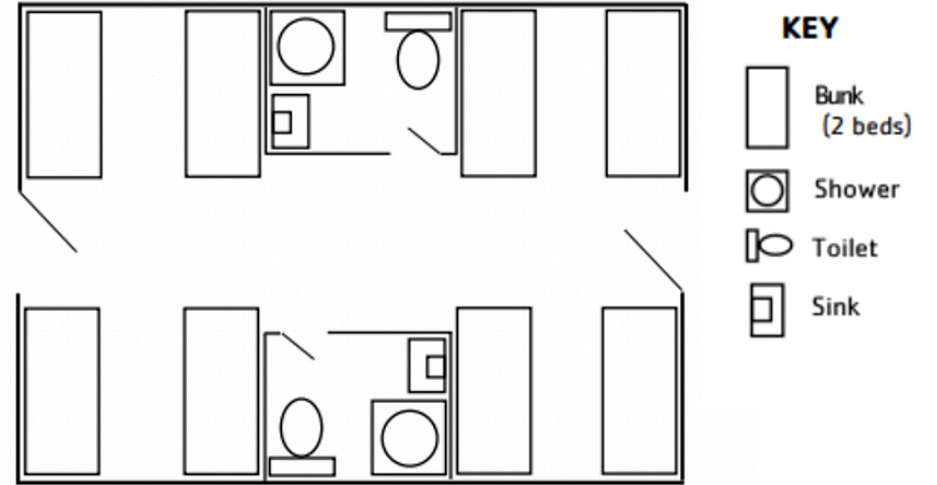
Your Campers will be staying in our Makua Cabins in one of our 3 pods:

Lost (Girls Pod)  
Rotary (Keiki Pod)  
Garden (Boys Pod)

# GET EXCITED!

- Know the Camp Then
- Check out the Cabins

ROTARY – 8 bunks & 2 bathrooms ♿



## Rotary (Keiki Pod)

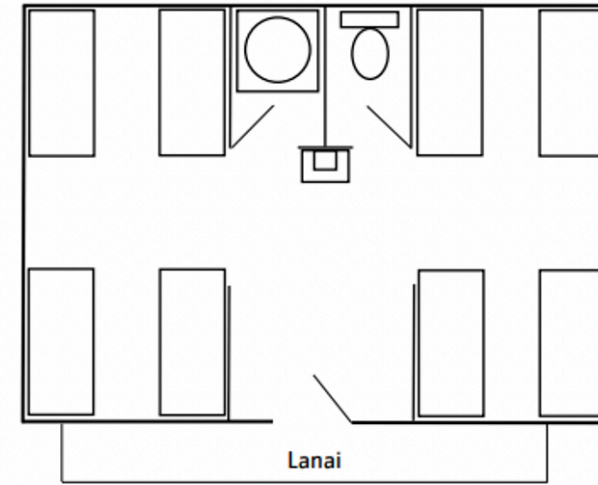
Our Junior Pod for Campers ages 7-11.

Each has 8 bunk beds, 2 private bathrooms, footlockers, & a storage cubby!

# GET EXCITED!

- Know the Camp Theme
- Check out the Cabins

GARDEN & LOST POD – 8 bunks & 1 bathroom (NEWLY RENOVATED!)



- KEY**
- Bunk (2 beds)
  - Shower
  - Toilet
  - Sink



## Lost Pod (Girls Pod) & Garden Pod (Boys Pod)

Our Senior Pod for the Campers ages 11-17.

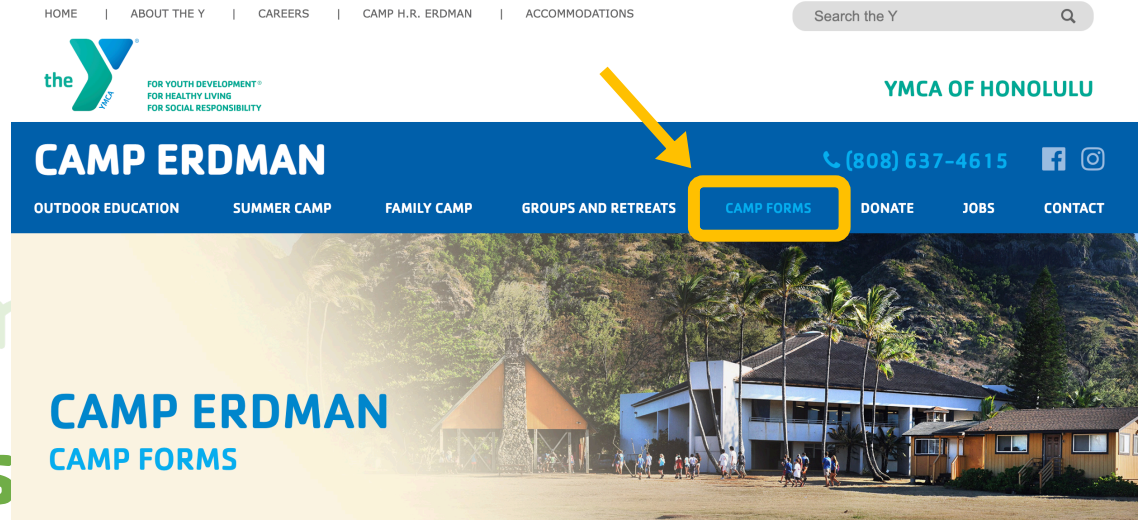
Each has 8 bunk beds, 1 private bathroom, footlockers, a storage cubby, & a shower house!

# GET EXCITED!

- ☐ Know the Camp Theme
- ☐ Check out the Cabins

**Each Cabin will have 8-14 Campers and 2 Counselors!**

**Our cabin placements vary weekly and rely on the enrollment and age range of each session. If you would like to request your camper be in the same cabin as a friend/sibling, please fill out one of our Cabin Request Forms on our website under "Forms"**



## CAMP ERDMAN

### OUTDOOR EDUCATION

[PARENT/GUARDIAN AND TEACHER INFORMATION](#)

### SUMMER CAMP

[DAY CAMP](#)

[TRADITIONAL OVERNIGHT CAMP](#)

[TEEN CAMPS](#)

[SESSION DATES](#)

[ADDITIONAL OPTIONS](#)

[EMPLOYMENT](#)

[FAQ](#)

### WEEKEND FAMILY CAMPS

### GROUPS & RETREATS

### ● CAMP FORMS

[DONATE](#)

[JOBS](#)

[CONTACT US](#)

[Camp Erdman](#) > [Camp Forms](#)

## CAMP FORMS

Links below allow you to download, print, complete and mail, scan & email or fax to camp.

Mail: YMCA Camp Erdman, 69-385 Farrington Hwy., Waiialua HI 96791  
Email: [CampErdman@ymcahonolulu.org](mailto:CampErdman@ymcahonolulu.org)  
Fax: (808) 664-8827  
Need help: call us at (808) 637-4615

**PLEASE NOTE:** Forms may not be compatible with Mac computers. If this happens, we encourage that you use a PC to complete electronic forms. However, you also have the option to print, complete and send to camp by email, fax or mail. We apologize for any inconvenience, please contact camp if you have any questions.

### SUMMER CAMP

- [Cabin Request Form](#)

### FAMILY CAMP

#### REQUIRED

- [General Waiver](#)

#### ADDITIONAL

- [Financial Aid Application](#)

### GROUPS & RETREATS

#### REQUIRED

- [User Agreement](#)
- [General Waiver](#)
- [Allergies and Dietary Restrictions Form](#)

#### ADDITIONAL

- [Sample Packing List](#)

# GET EXCITED!

Know the

Check o

Pack!!

**Masks  
are  
optional!**

**Start packing the week leading up to  
your campers Camp Session!**

**IMPORTANT CLOSED-TOED SHOES!** Campers will need closed-toed shoes to participate in majority of Camp activities!

We have extra toiletries, sheets, clothes, & shoes just in case your camper forgets anything but please do your best to prep your kiddo with everything they'll need! 😊

What to Bring	What NOT to Bring
<ul style="list-style-type: none"><li><input type="checkbox"/> Face Masks that cover nose and mouth. (Face shields without masks, masks with vents and gaiters are not acceptable.)</li><li><input type="checkbox"/> Water Bottle</li><li><input type="checkbox"/> (2) Closed-toed Shoes and socks</li><li><input type="checkbox"/> Slipper / Flip Flops (+ Shower Shoes)</li><li><input type="checkbox"/> Swimsuit</li><li><input type="checkbox"/> (6) T-shirts</li><li><input type="checkbox"/> (6) Pairs of underwear</li><li><input type="checkbox"/> (6) shorts</li><li><input type="checkbox"/> Pajamas</li><li><input type="checkbox"/> Light Jacket</li><li><input type="checkbox"/> Laundry Bag</li><li><input type="checkbox"/> (2) Towels</li><li><input type="checkbox"/> Sunglasses</li><li><input type="checkbox"/> Sunscreen &amp; Chapstick</li><li><input type="checkbox"/> Hat</li><li><input type="checkbox"/> Insect Repellent</li><li><input type="checkbox"/> Flashlight</li><li><input type="checkbox"/> Backpack or Day Pack</li><li><input type="checkbox"/> Sleeping bag</li><li><input type="checkbox"/> Set of sheets - Twin XL</li><li><input type="checkbox"/> Pillow</li><li><input type="checkbox"/> Toiletries (shampoo, soap, toothpaste, etc.)</li><li><input type="checkbox"/> Optional: Themed Costume (see Weekly Themes on page 11)</li><li><input type="checkbox"/> Optional: Envelope &amp; Stamps</li></ul>	<ul style="list-style-type: none"><li>● Cell phones</li><li>● Laptops</li><li>● Tablets</li><li>● Jewelry</li><li>● Smartwatches</li><li>● Pets</li><li>● Portable games</li><li>● Hair dryers</li><li>● Straighteners / Curling irons</li><li>● Any electronic devices</li><li>● Snacks</li></ul>

**NO ELECTRONICS**

**\*Stayover campers can access their phones for a few hours over the weekend to check in with family and friends\***

# GET EXCITED!

- Know the Camp Theme
- Check out the Cabin
- Pack!!
- Talk with your Camper(s)**

Going to camp can be scary, especially for first time campers!

Talk to you camper before and let them know what to expect! Below are some conversations to have:

- Camp Activities
- The sleep schedule
- How to make Camp friends!
- Self-care
- Ways to stay in touch





# GET EXCITED!

- Know the Camp Theme
- Check out the Cabin
- Pack!!
- Talk with your Camper(s)

## Camp Activities

**What's Summer Camp going to be like?**

**Talk to your Camper about the activities their most excited for! Or least looking forward to!**

**Pool**

**Archery**

**Swimming**

**Arts & Crafts**

**Gaga Ball**

**Talent Show**

**Specialty Camps** (Horse, surf, adventure, etc.)

**Alpine Tower**

**Odyssey** (ages 13+)

**Camp Dance**

**Campfires**

**Sports**

**All Camp Games!**

# GET EXCITED!

- Know the Camp Theme
- Check out the Cabin
- Pack!!
- Talk with your Camper(s)**

## The sleep schedule

Wake up time is 7AM and campers start unwinding with showers & reflection at 8:15pm. Then it's camp-wide lights out at 10pm!

Try to prepare your camper for the sleeping schedule a few weeks before.

Wake them up a little earlier and send them to bed a little later each day.

# GET EXCITED!

**BE  
YOURSELF**



Invite them  
to be your  
bunk buddy

Be Kind!  
Ask them how  
they're doing? Help  
them tidy their  
bunk in the  
morning. Share a  
game you brought.  
Tell them you like  
their shirt!

**Talk with your  
Camper(s)**

Tell them  
a funny  
story!

Teach  
someone a  
fun card  
game

Ask them things  
about themselves!  
Ask them what's their  
favorite color, sport, food,  
etc. Have they been to camp  
before? Where are they from?

## How to make Camp friends!

Meeting new people can be  
intimidating, but luckily Summer Camp  
is the perfect place to make  
new friends! Talk with  
your camper before  
hand about how you  
Make friends and  
get to know new  
people!!



To the left are some  
suggestions on how  
Your camper can connect  
with their cabinmates!

# GET EXCITED!

- Know the Camp Theme
- Check out the Cabin
- Pack!!
- Talk with your Camper(s)

## Self-care

Teach your camper how to keep themselves happy and healthy throughout the week!

- Hydrate by drinking water throughout the day
- Eat enough food during meals
- Get lots of sleep
- Shower & brush their teeth before bed
- Wear clean clothes
- Keep bunk tidy
- Take some alone time when they need it (read or color in their bunk during quiet time or at the end of the day)

# GET EXCITED!

- Know the Camp Theme
- Check out the Cabin
- Pack!!
- Talk with your  
Camper(s)

## Ways to stay in touch

Chances are your camper is going to miss you just as much as you miss them.

To stay in touch, send a “letter” to their camper using our camp mail email:

[cmail@ymcahonolulu.org](mailto:cmail@ymcahonolulu.org)

Please include your camper’s name in the subject line. Letters sent to our camp mail email are printed daily and delivered following lunch. Please send emails by 11:00am to ensure your camper receives their letter.

# WE'RE SO EXCITED TO WELCOME YOU AND YOUR CAMPER(S) TO YMCA CAMP ERDMAN!



For all other Residential Summer  
Camp information, check out  
our Parent Handbook!



Any questions or concerns you may have please contact us at  
[camperdman@ymcahonolulu.org](mailto:camperdman@ymcahonolulu.org) or call our Service Center at 808.637.4615