



**WINDWARD YMCA**

1200 Kailua Rd  
Kailua HI 96734  
ymcahonolulu.org

**Fall Day Camp Staff**

Site Coordinator

**AM: Makena Liu**

**PM: Shirel Navarro**

Youth Leaders

**Cameron Blake**

**Keano Cosier**

**River Phillippus**

**Serenity Yamaguchi-Taufaasau**

**Alyssa Baoas**

**Karl-Dan Selga**

**Elle Tinder**

**Christina Williams Vesessio**

**Ua Alo-Williams**

Youth Directors

**Amber Bustamante**

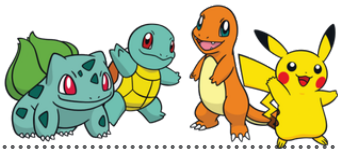
abustamante@ymcahonolulu.org

(808)262-1485

**Devan Tatemichi**

dtatemichi@ymcahonolulu.org

(808)262-1495



**Program Hours**

**Monday-Friday**

7am-5:30pm

**Drop-Off:** 7am-8am

**Pick-Up:** 4:30pm-5:30pm

**Day Camp Site Phone Number**

**808-492-6781**

# Windward Day Camp Newsletter

Fall Intersession - October 7-11

## Gotta Catch 'Em All







**WEEKLY THEME**

**LET'S DIVE INTO THE WORLD OF POKEMON! SAME AS OUR KEIKI, POKEMON DEVELOP, GROW AND EVOLVE. CHANGE AND GROWTH IS NOT ALWAYS COMFORTABLE FOR KIDS SO WITH THESE ACTIVITIES WE HOPE TO EXPLORE THEIR ABILITIES AND HELP THEM LEVEL UP!**

**OUR PROGRAM**

**When school is on a break, the Y provides a safe and enriching environment for elementary-age students with seasonal day camps. Programs include swimming, sports, games, arts and crafts, music and dance, drama, and field trips.**

**ACTIVITY SCHEDULE**

Mon October 7	Tues October 8	Wed October 9	Thur October 10	Fri October 11
<b>Create A Pokeball</b>  	<b>Pokemon Scavenger Hunt</b> 	 <b>Recreational Swim</b>	<b>Waimanalo Pumpkin Patch</b> 	 <b>Catch Pumpkaboo</b>

**IMPORTANT INFORMATION**

- **DROP-OFF:** 7am—8 am and **PICK-UP:** 4:30pm-5:30pm—If you will be dropping off or picking up your child(ren) outside of the times listed above, please notify us at **808-492-6781** so we can meet you curbside.
- **100% ID CHECKS** – For **SAFETY** purposes, please have your ID ready to present when picking up your child(ren).
- Please pack 2 snacks- one for AM and one for PM. We are a **NUT-FREE** program, please do not pack snacks containing nut products.
- Please send your child(ren) with a **labeled** reusable water bottle.
- **Swim Days:** **Wednesdays and Fridays** from **10 a.m. - 1:00 p.m.**, with approximately 45 min. of swim time per group. Please send your child(ren) with sunscreen, a towel, extra clothes, a bag for extra clothes, and slippers on their swim day(s).
- **Late Fees:** Last pick-up time is at 5:30 p.m. After 5:30 p.m., there will be a late fee of 5\$ for every 5 minutes; after 15 minutes, there will be a 1\$ charge for each minute thereafter.



## THINGS TO BRING TO CAMP DAILY

- **Snacks** - We have two snack times each day. Please pack enough for your child~ they are very active and get very hungry!
- **Lunch** - Refrigeration and microwaves are NOT available.
- **Sunscreen**—It should be applied at home and reapplied after swimming. Spray lotion for the body and a stick for the face are suggested. Now is a great time to teach your child how to use sunscreen, as staff are not authorized to apply it to any child.
- **Refillable water bottle** - We have water refill stations for children to get a refill.
- **Art Supplies** - Pencils, erasers, coloring utensils, etc.

## GENERAL DAY CAMP SCHEDULE

- 7:00 am-8:30 am: **Drop off**  
8:30 am-9:30 am: **Activity 1**  
9:30 am-10:30 am: **Activity 2 / Snack**  
10:30 am-11:30 am: **Activity 3**  
11:30 am-12:30 pm: **Lunch**  
12:30 pm-1:30 pm: **Activity 4**  
1:30 pm-2:30 pm: **Activity 5**  
2:30 pm-3:30 pm: **Activity 6 / Snack**  
3:30 pm-4:30 pm: **Activity 7**  
4:30 pm-5:30 pm: **Free Play / Pick-Up**



## Family Bucket List Pokemon Edition

- Create a pokeball out of an apple
- Use pancake batter to create a pokemon
- Dress up your pet as Charmander



## PROMOTIONS

**FREE HAWAII CHILDREN & YOUTH DAY FESTIVAL:**  
**SAT, OCT 6, 10A - 3P**  
Frank F. Fasi Civic Center, Kalanimoku and Punchbowl St: Fun, Food, Entertainment, Health & Education Activities

**HALLOWEEN EVENTS at the Y**

[bit.ly/4e1TH8T](https://bit.ly/4e1TH8T)

**REGISTER FOR FALL & WINTER DAY CAMP**

Oct 7 - 11

Dec 23 - 27

Dec 30 - Jan 3

[bit.ly/3vTBjOw](https://bit.ly/3vTBjOw)

**CAMP ERMAN HOLIDAY DAY CAMPS**

- Election Day: 11.5
- Veterans Day: 11.11
- Friday after Thanksgiving: 11.29

[bit.ly/459aIJT](https://bit.ly/459aIJT)

**ALL-INCLUSIVE CAMP ERDMAN FAMILY CAMPS**

- Halloween: Oct 25-27
- Veterans: Nov 8-10
- Holiday: Dec 20 - 22
- Private cabins, all-inclusive: Meals & Activities

[bit.ly/3T7IZFM](https://bit.ly/3T7IZFM)

**BEACHFRONT YURT AND CABIN RENTALS - KAMAAINA SPECIAL**

- Starts at \$135/per night
- Bring your own food

[bit.ly/3T7IZFM](https://bit.ly/3T7IZFM)

- **FREE Y TEEN CLUB**  
Grades: 6th - 12th  
Afterschool & some weekends.
- Experience Academic support, activities, island-wide adventures.

[bit.ly/3WCdkgg](https://bit.ly/3WCdkgg)

**Y Family Members Save Up to 20% on Camps & Programs**  
[bit.ly/4azhJpE](https://bit.ly/4azhJpE)

**FINANCIAL AID: PROGRAMS, CAMPS, MEMBERSHIP**  
[bit.ly/YMCAaId](https://bit.ly/YMCAaId)

